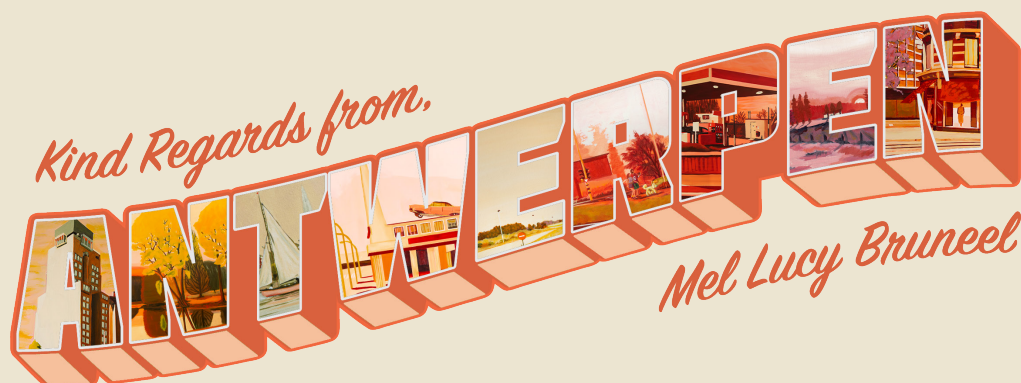




CATALOGUS





- 1 _____ THE GAS STATION, BOOMSESTEENWEG, 2610 ANTWERPEN, BELGIE
- 2 _____ URGENT DIVERGENCE, KONTICHSESTEENWEG, 2630 AARTSELAAR, BELGIE
- 3 _____ MORNING WALK, OLYMPIADE, BOOMSESTEENWEG, 2610 ANTWERPEN, BELGIE
- 4 _____ THE FASHION DISTRICT, ODE TO JRIES VAN NOTEN, NATIONALESTRAAT 2000, ANTWERPEN, BELGIE
- 5 _____ CONSTRUCTION EVERYWHERE, LEDEGANCKKAAI, 2000 ANTWERPEN, BELGIE
- 6 _____ PROMENOIR DU NORD, JORDAENSKAAI, 2000 ANTWERPEN, BELGIE
- 7 _____ STOP SIGN, BOLIVAR, BRUSSELSTRAAT, 2018 ANTWERPEN, BELGIE
- 8 _____ REX, KEYSERLEI, 2018 ANTWERPEN, BELGIE
- 9 _____ FARMER'S TOWER, SCHOENMARKT, 2000 ANTWERPEN, BELGIE
- 10 _____ IJZEREN BRUG, ROOSEVELTPLAATS, 2000 ANTWERPEN, BELGIE
- 11 _____ ANTWERPEN ROOFS, SINT-ANDRIES, 2000 ANTWERPEN, BELGIE
- 12 _____ DOWN THE STREET, GROTE PIETER POTSTRAAT, 2000 ANTWERPEN, BELGIE
- 13 _____ SINT-ANNEKE PLAGE, LINKEROEVER, 2000 ANTWERPEN, BELGIE
- 14 _____ ROYAL YACHT CLUB, VIEW FROM VAN METERENKAAI, 2000 ANTWERPEN, BELGIE
- 15 _____ PARK SPOOR NOORD, LENA CADIX, KEMPENSTRAAT, 2030 ANTWERPEN BELGIE
- 16 _____ TRAM, AT THE CORNER OF SUIKERRUI AND ERNEST VAN DIJCKKAAI, 1899, 2000 ANTWERPEN, BELGIE
- 17 _____ PONTON, ZUIDERKAAIEN, 2000 ANTWERPEN, BELGIE
- 18 _____ RIGHT BANK, DE REEDE, 2000 ANTWERPEN, BELGIE
- 19 _____ STADSPARK, RUBENSLEI, 2018 ANTWERPEN, BELGIE
- 20 _____ THE EMPTY RESTAURANT, GRAAF VAN EGMONTSTRAAT, 2000 ANTWERPEN, BELGIE
- 21 _____ THE DOCKS HOTEL 1, NOORDERLAAN, 2030 ANTWERPEN, BELGIE
- 22 _____ THE DOCKS HOTEL 2, NOORDERLAAN, 2030 ANTWERPEN, BELGIE
- 23 _____ THE DOCKS HOTEL 3, NOORDERLAAN, 2030 ANTWERPEN, BELGIE
- 24 _____ SCHELDEBOCHT (LEFT), NOORDKASTEEL-COST 2030, ANTWERPEN, BELGIE

POSTCARDS

Mel Lucy Brunel



Mel Lucy Brunel



Mel Lucy Brunel



Mel Lucy Brunel



Mel Lucy Brunel



Mel Lucy Brunel



Mel Lucy Brunel



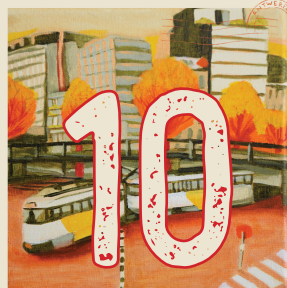
Mel Lucy Brunel



Mel Lucy Brunel



Mel Lucy Brunel



Mel Lucy Brunel



Mel Lucy Brunel



Mel Lucy Brunel



Mel Lucy Brunel



Mel Lucy Brunel



Mel Lucy Brunel



Mel Lucy Brunel



Mel Lucy Brunel



Mel Lucy Brunel



Mel Lucy Brunel



Mel Lucy Brunel



Mel Lucy Brunel



Mel Lucy Brunel



Mel Lucy Brunel



Mel Lucy Brunel

POSTCARDS

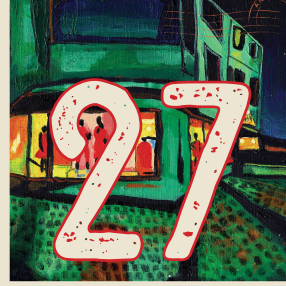
Mel Lucy Brunel



Mel Lucy Brunel



Mel Lucy Brunel



Mel Lucy Brunel



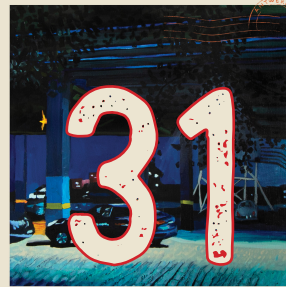
Mel Lucy Brunel



Mel Lucy Brunel



Mel Lucy Brunel



Mel Lucy Brunel



Mel Lucy Brunel



Mel Lucy Brunel



Mel Lucy Brunel



Mel Lucy Brunel



Mel Lucy Brunel



Mel Lucy Brunel



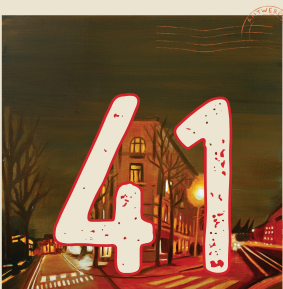
Mel Lucy Brunel



Mel Lucy Brunel



Mel Lucy Brunel



Mel Lucy Brunel



Mel Lucy Brunel



Mel Lucy Brunel



Mel Lucy Brunel



Mel Lucy Brunel



Mel Lucy Brunel



- 25 _____ SCHELDEBOCHT (RIGHT), NOORDKASTEEL-COST 2030, ANTWERPEN, BELGIE
- 26 _____ OUT OF THIS WORLD, THE FRIENDSHIP BUILDING, RIJNKAAL, 2000 ANTWERPEN, BELGIE
- 27 _____ STORE BY NIGHT, NAPOLEONKAAL, 2000 ANTWERPEN, BELGIE
- 28 _____ WINDOW VIEW, FROM FORMER APARTMENT, ANSELMOSTRAAT, 2018 ANTWERPEN, BELGIE
- 29 _____ DEEP WATERS, POND NOORDKASTEEL, 2030 ANTWERPEN, BELGIE
- 30 _____ THE PHONE CALL, KONING ALBERTPARK, 2018 ANTWERPEN, BELGIE
- 31 _____ PICK ME UP, RIJNKAAL, 2000 ANTWERPEN, BELGIE
- 32 _____ GOOD GIRL, NACHTROER, HOOGSTRAAT, 2000 ANTWERPEN, BELGIE
- 33 _____ MOODSWING, VAN METERENKAAL, 2000 ANTWERPEN, BELGIE
- 34 _____ ONE OF THOSE WALKS, MIDDELHEIMMUSEUM, 2020 ANTWERPEN, BELGIE
- 35 _____ OCEAN DRIVE, SINT-MICHIELSKAAL, 2000 ANTWERPEN, BELGIE
- 36 _____ ENSEMBLE, BUS 500, BOOMSESTEENWEG, 2630 AARTSELAAR, BELGIE
- 37 _____ SUNSET, BARON VAN ERTBORNSTRAAT, 2630 AARTSELAAR, BELGIE
- 38 _____ DE GAZET, NATIONALESTRAAT, 2000 ANTWERPEN, BELGIE
- 39 _____ GANTERIE BOON, LOMBARDENVEST, 2000 ANTWERPEN, BELGIE
- 40 _____ HAVENKRANEN, RIJNKAAL, 2000 ANTWERPEN, BELGIE
- 41 _____ CAFE COSTUME, EMIEL BANNINGSTRAAT, 2000 ANTWERP, BELGIE
- 42 _____ COWS, BOOMSESTEENWEG, 2610 ANTWERP, BELGIE
- 43 _____ THE FASHION DISTRICT 2, CODE TO DRIES VAN NOTEN, NATIONALESTRAAT 2000, ANTWERPEN, BELGIE
- 44 _____ DE GOUDEN RAM, LUIKERRUI, 2000 ANTWERP, BELGIE
- 45 _____ GROENPLAATS, 2000 ANTWERP, BELGIE
- 46 _____ GROENPLAATS, 2000 ANTWERP, BELGIE

POSTCARDS

Mel Luy Brunel



Mel Luy Brunel



Mel Luy Brunel



Mel Luy Brunel



Mel Luy Brunel



Mel Luy Brunel



Mel Luy Brunel



Mel Luy Brunel



Mel Luy Brunel



Mel Luy Brunel



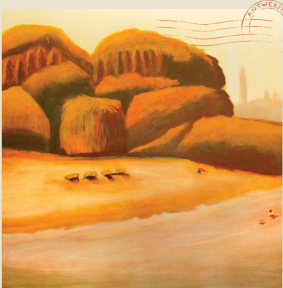
Mel Luy Brunel



Mel Luy Brunel



Mel Luy Brunel



Mel Luy Brunel



Mel Luy Brunel



Mel Luy Brunel



Mel Luy Brunel



Mel Luy Brunel



Mel Luy Brunel



Mel Luy Brunel



Mel Luy Brunel



Mel Luy Brunel



Mel Luy Brunel



Mel Luy Brunel



Mel Luy Brunel

POSTCARDS

Mel Lucy Brunel



Mel Lucy Brunel



Mel Lucy Brunel



Mel Lucy Brunel



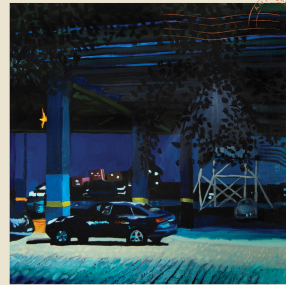
Mel Lucy Brunel



Mel Lucy Brunel



Mel Lucy Brunel



Mel Lucy Brunel



Mel Lucy Brunel



Mel Lucy Brunel



Mel Lucy Brunel



Mel Lucy Brunel



Mel Lucy Brunel



Mel Lucy Brunel



Mel Lucy Brunel



Mel Lucy Brunel



Mel Lucy Brunel



Mel Lucy Brunel



Mel Lucy Brunel



Mel Lucy Brunel



Mel Lucy Brunel



Mel Lucy Brunel



Mel Lucy Brunel